

Corridor 130-131(N)/130-131(S)

San Miguel Canyon

Corridor Rationale

Input regarding alignment from the Western Utility Group during the WVEC PEIS suggested following this route. Along Corridor 130-131(N), the Tri-State Montrose-Nucla-Cahone 115-kV to 230-kV upgrade is currently being constructed and plans for completion are for late winter 2018/2019. There are no other planned transmission or pipeline projects within the corridor and no pending or recently authorized major ROWs for transmission line or pipeline projects within the corridor at this time.

Corridor location:

Colorado (Montrose and San Miguel Co.)
 BLM: Tres Rios and Uncompahgre Field Offices
 USFS: Grand Mesa, Gunnison, and Uncompahgre (GMUG) National Forest
 Regional Review Region(s): Region 2

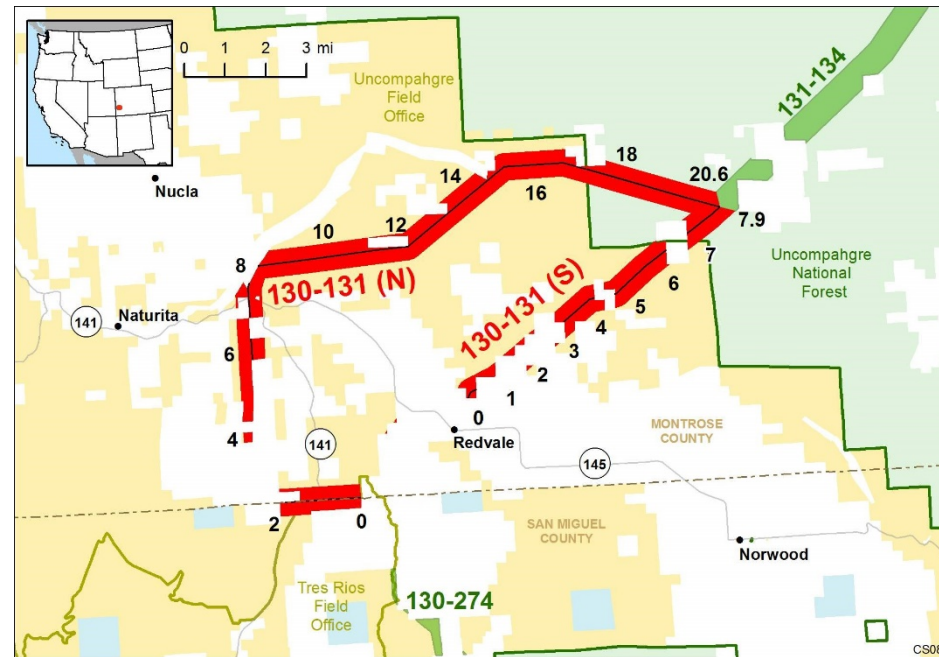
Corridor width, length:

Width 3,500 ft
 15.5 miles [Corridor 130-131(N)] and 4 miles [Corridor 130-131(S)] of designated corridor
 20.6 mile-posted route [Corridor 130-131(N)] and 7.9 mile-posted route [Corridor 130-131(S)], including gaps

Sec 368 energy corridor restrictions: (Y)

- Corridor 130-131(N) is electrical transmission only, Corridor 130-131(S) is multi-modal

Corridor of concern (N)



Corridor history:

- Locally designated corridor prior to 2009 (N)
- Existing infrastructure (Y)
 - Electric transmission:
 - 115-kV line (MP 0 to MP 8) in Corridor 130-131(N)
 - 230-kV line (MP 2 to MP 21) in Corridor 130-131(N)
 - Pipelines:
 - 2 natural gas (MP 0 to MP 3) in Corridor 130-131(S)
 - 2 natural gas (MP 3 to MP 8) in Corridor 130-131(S)
- Energy potential near the corridor (Y)
 - coal power plant within 1,100 ft of Corridor 130-131(N) at MP 8
- Corridor changes since 2009 (N)

Figure 1. Corridor 130-131(N)/130-131(S)

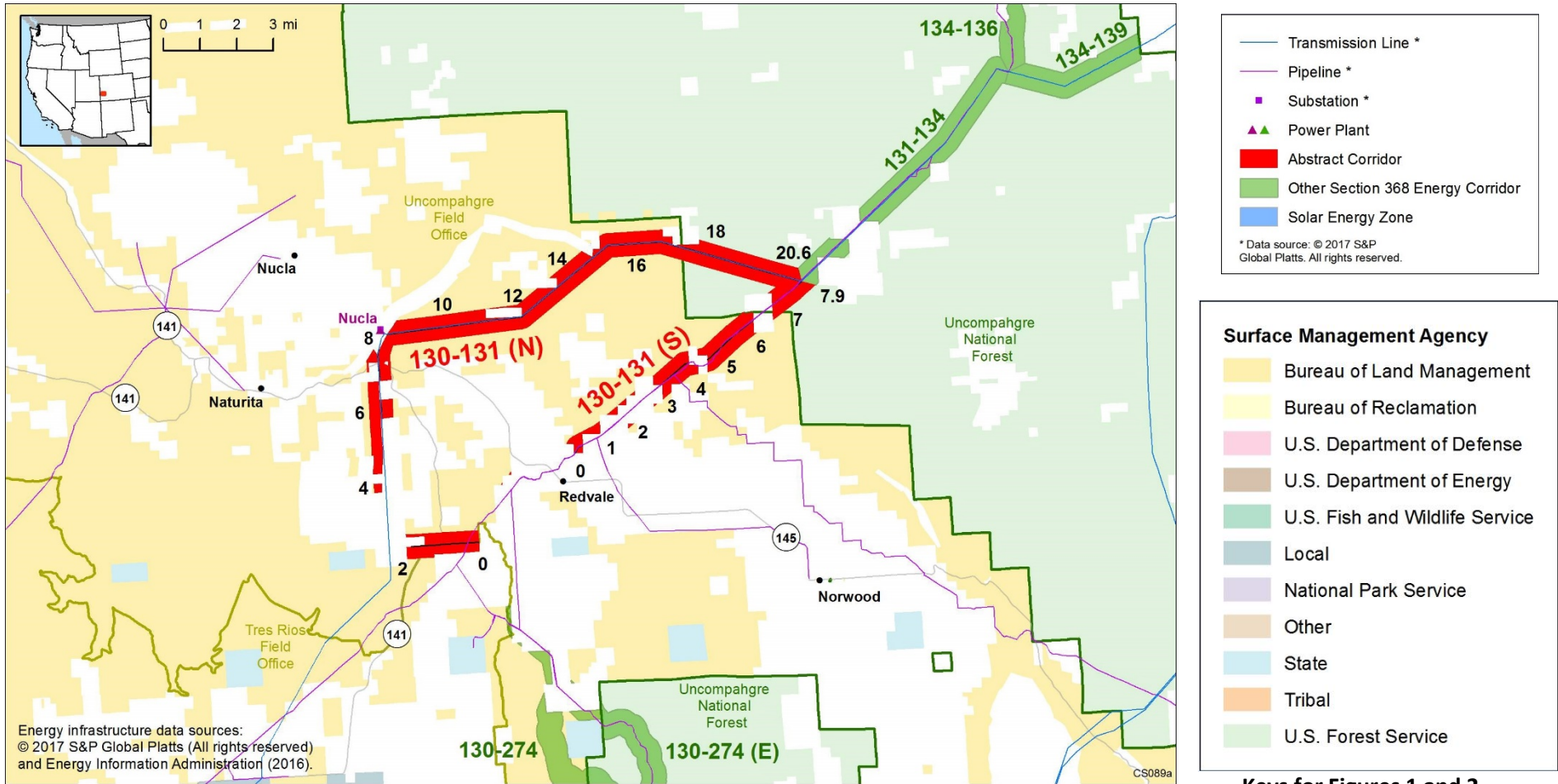


Figure 2. Corridor 130-131(N)/130-131(S) and nearby electric transmission lines and pipelines

Conflict Map Analysis

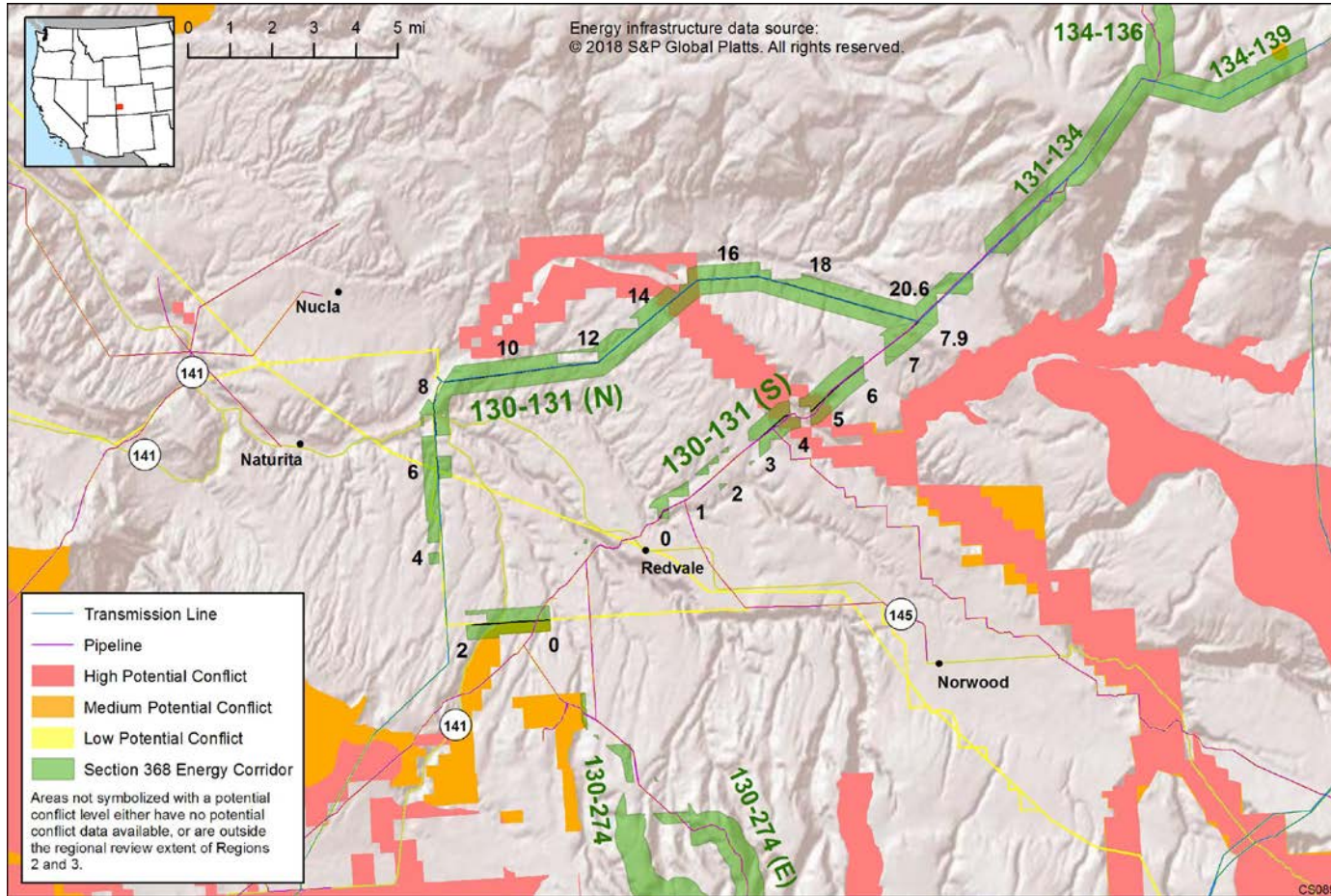


Figure 3. Map of Conflict Areas in Vicinity of Corridor 130-131(N)/130-131(S)

Figure 3 reflects a comprehensive resource conflict assessment developed to enable the Agencies and stakeholders to visualize a corridor’s proximity to environmentally sensitive areas and to evaluate options for routes with lower potential conflict. The potential conflict assessment (low, medium, high) shown in the figure is based on [criteria](#) found on the WWEC Information Center at www.corridoreis.anl.gov. To meet the intent of the Energy Policy Act and the Settlement Agreement siting principles, corridors may be located in areas where there is potentially high resource conflict; however, where feasible, opportunity for corridor revisions should be identified in areas with potentially lower conflict.

Visit the 368 Mapper for a full view of the Potential conflict map (<https://bogi.evs.anl.gov/section368/portal/>)

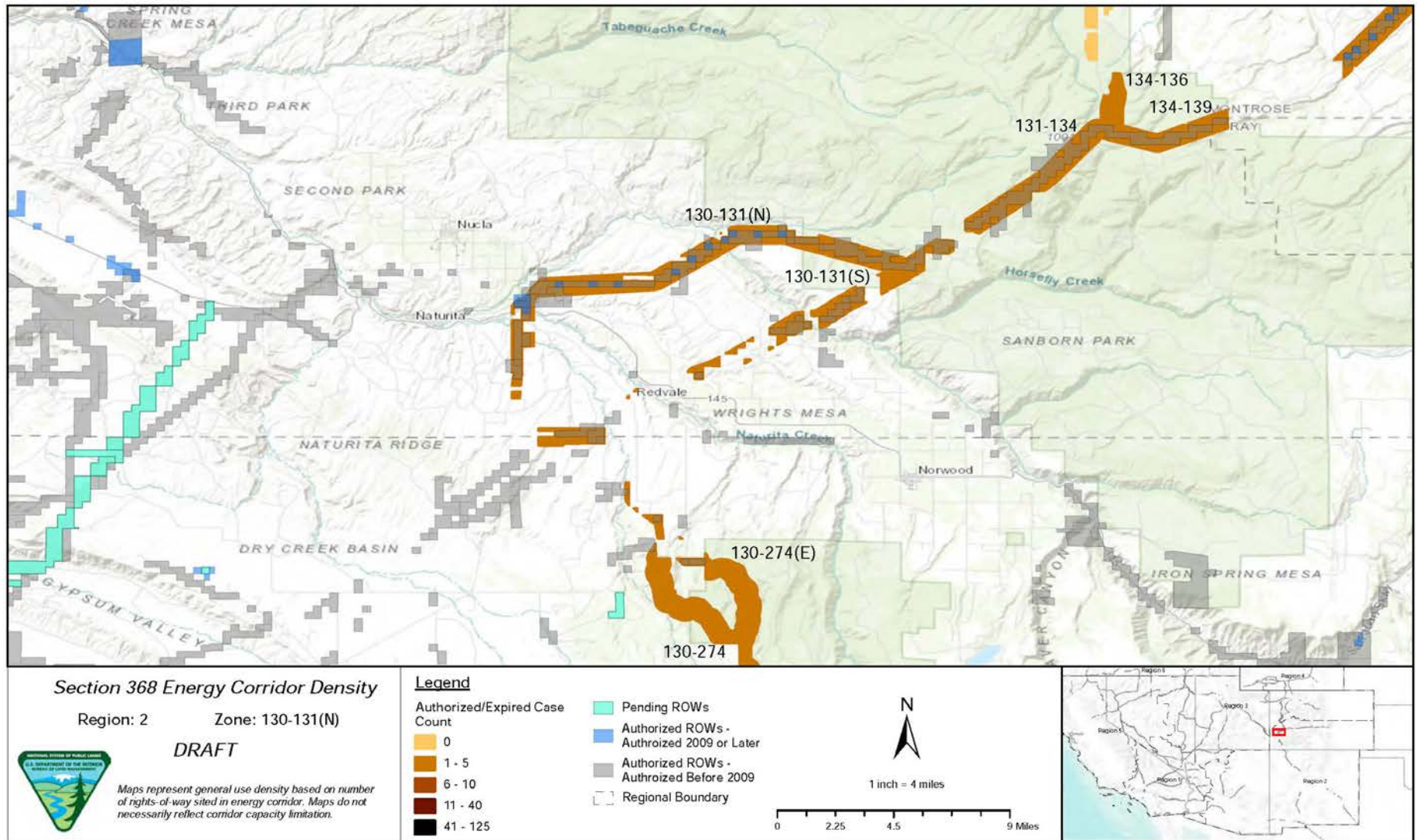


Figure 4. Corridor 130-131(N), Corridor Density Map

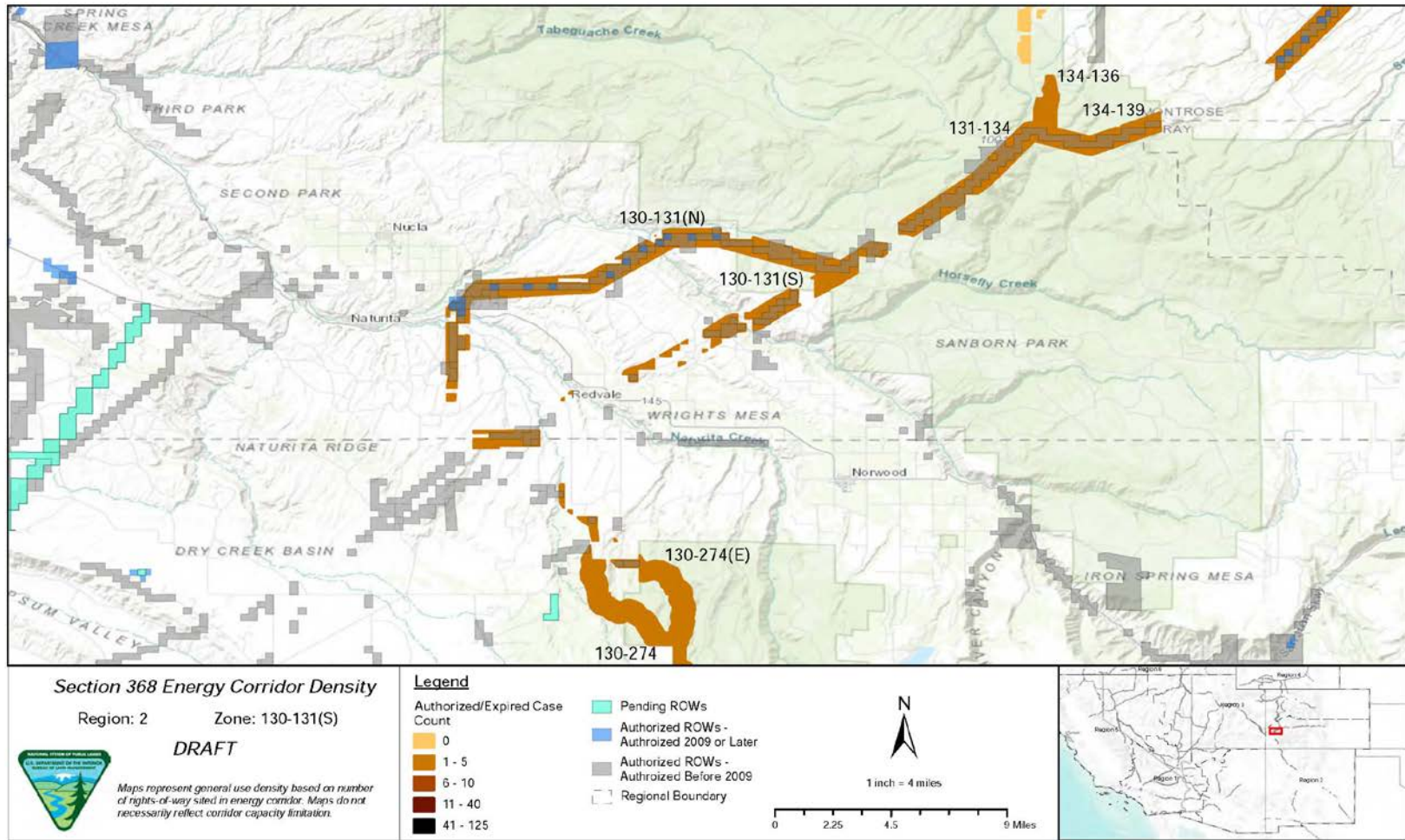


Figure 5. Corridor 130-131(S), Corridor Density Map

Figures 4 and 5 show the density of energy use to assist in evaluating corridor utility. ROWs granted prior to the corridor designation (2009) are shown in grey; ROWs granted after corridor designation are shown in blue; and pending ROWs under current review for approval are shown in turquoise. Note the ROW density shown for the corridor is only a snapshot that does not fully illustrate remaining corridor capacity. Not all ROWs have GIS data at the time this abstract was developed. BLM and USFS are currently improving their ROW GIS databases and anticipate more complete data in the near future.

General Stakeholder Feedback on Corridor Utility

Stakeholders did not provide specific input on corridor utility.

Corridor Review Table

The table below captures details of the Agencies' review of the energy corridor. Consideration of the general corridor siting principles of the 2012 Settlement Agreement framed each corridor review, to identify potential improvements to maximize corridor utility and minimize impacts on the environment. Initial Agency analysis is provided to facilitate further discussion during stakeholder workshops.

CORRIDOR 130-131(N)(S) REVIEW TABLE							
ID	Agency	Agency Jurisdiction	County	Primary Issue	Corridor Location (by Milepost [MP])	Source	Agency Review and Analysis ^{1, 2}
ENVIRONMENTAL RESOURCE ISSUES							
<i>Specially Designated Areas</i>							
130-131.001	USFS	GMUG National Forest	Montrose, CO	Horsefly Canyon Colorado Roadless Area	Corridor 130-131(N): MP 20.5 (near) Corridor 130-131(S): MP 7 to MP 8 (near)	GIS Analysis: Colorado Roadless Area over 1 mi from corridor. Colorado Roadless Area less than 1 mi from corridor.	The corridor is not located in the Colorado Roadless Area and development and management inside of the corridor would not be affected. (1)
130-131.002	BLM	Uncompahgre FO	Montrose, CO	San Miguel ACEC	Corridor 130-131(S): MP 5 (near)	GIS Analysis: ACEC less than 1 mi southeast of corridor.	ACECs are an important resource that are considered carefully during corridor planning. The corridor's current location does not intersect the ACEC and best meets the siting principles. (1)
130-131.003	BLM	Uncompahgre FO	Montrose, CO	San Miguel River SRMA	Corridor 130-131(N): MP 14 to MP 15 Corridor 130-131(S): MP 4 to MP 5	GIS Analysis: SRMA intersects corridor.	According to the RMP Amendment for the San Juan/San Miguel ACEC and SRMA, the SRMA is open to major utility corridors, subject to VRM guidelines. The area downstream of Horsefly Creek would be open to major utilities until construction and maintenance impacts on the riparian zone reach 5% of the total riparian acreage. (1)
<i>Ecology</i>							
130-131.004				Special Status Species	Not specified.	Additional species not identified in the corridor abstract may be present: North American	This corridor location within the current range where these species may occur is not easily resolved or avoided

CORRIDOR 130-131(N)(S) REVIEW TABLE

ID	Agency	Agency Jurisdiction	County	Primary Issue	Corridor Location (by Milepost [MP])	Source	Agency Review and Analysis ^{1,2}
						<p>Wolverine, Gunnison Sage-grouse, Mexican Spotted Owl, Bonytail Chub, Colorado Pikeminnow, Greenback Cutthroat Trout, Humpback Chub, Razorback Sucker.</p> <p>Conduct further analysis to determine the presence of abovementioned species.</p>	<p>by corridor-level planning because alternative routes would still require siting through the current range of these species. Further analysis to determine the presence of all species occurring within the area will be considered outside of corridor-level planning. (3)</p>
130-131 .005	USFS	GMUG National Forest	Montrose, CO	Deer, elk	<p>Corridor 130-131(N): MP 18 to MP 21</p> <p>Corridor 130-131(S): MP 7 to MP 8</p>	Agency Input: deer and elk winter range along corridor.	Ungulate winter habitat is an important consideration but further analysis of these species is not a consideration for corridor-level planning. (3)
Lands with Wilderness Characteristics							
130-131 .006	BLM	Uncompahgre FO	San Miguel, CO	Lands with wilderness characteristics	Not specified.	RFI: BLM-identified potential lands with wilderness characteristics: Norwood Canyon	<p>The BLM retains broad discretion regarding the multiple use management of lands possessing wilderness characteristics without Wilderness or WSA designations. As such, land possessing the characteristics of wilderness are not subject to the legal thresholds or other statutory obligations specified for congressionally designated Wilderness and WSAs. There are necessities that warrant land use and thus rationalize energy corridors as meeting the best siting principles, which include maximizing utility while minimizing impacts. In locations where the BLM is not managing lands with wilderness characteristics with protective allocations, project level planning will still consider ways to minimize or avoid impacts while meeting the purpose and need of various types of land use including energy projects. Furthermore, the impairment of</p>

CORRIDOR 130-131(N)(S) REVIEW TABLE

ID	Agency	Agency Jurisdiction	County	Primary Issue	Corridor Location (by Milepost [MP])	Source	Agency Review and Analysis ^{1,2}
<p>wilderness characteristics does not, in and of itself, constitute a significant impact; or on its own, warrant the relocation of a corridor or corridor segment. BLM must consider all resources and resource uses and carefully weigh the current value for the present generation as well as for future generations. At this time, given the information available the corridor is determined as best meeting the siting principles of the settlement agreement. (1)</p>							
<p>Visual Resources</p>							
130-131 .007	BLM	Tres Rios FO Uncompahgre FO	San Miguel, CO Montrose, CO	VRM Class III	Corridor 130-131 (N): MP 0 to MP 2 and MP 14 to MP 15 Corridor 130-131(S): MP 4 to MP 5	GIS Analysis: VRM Class III areas and corridor intersect.	VRM Class III allows for moderate change to the characteristic landscape, although minimizing visual contrast remains a requirement. Management activities may attract the attention of the casual observer, but shall not dominate the view. (1)
<p>Cultural Resources</p>							
130-131 .008	BLM	Tres Rios FO	San Miguel, CO	Lack of cultural surveys	Not specified.	Agency Input: cultural surveys would need to be performed within corridor boundary. Prehistoric sites located along Corridor 130-131(N).	The potential for cultural resources is a concern for the Agencies that cannot be resolved during corridor-level planning. Surveys will occur as part of the ROW application process. Existing IOPs specific to cultural resources and tribal consultation would be followed in connection with any proposed energy project in the corridor. (3)
<p>Land Use Concerns</p>							
<p>Public Access and Recreation</p>							
130-131 .009	BLM	Uncompahgre FO	Montrose, CO	UnawEEP/ Tabeguache Scenic and Historic Byway	Corridor 130-131(N): MP 7 to MP 8	GIS Analysis: byway intersects corridor.	UnawEEP/ Tabeguache Scenic and Historic Byway is administered by CDOT, and future development in the corridor would require coordination with this agency. (3)

CORRIDOR 130-131(N)(S) REVIEW TABLE							
ID	Agency	Agency Jurisdiction	County	Primary Issue	Corridor Location (by Milepost [MP])	Source	Agency Review and Analysis ^{1,2}
							<p>There is no opportunity for the corridor to avoid intersecting the byway.</p> <p>According to the August 1995 CDOT Plan, coordination with existing holders is required for any project-specific proposal. (3)</p>

¹ Projects proposed in the corridor would be reviewed during their ROW application review process and would adhere to Federal laws, regulations, and policy.

² (1) = confirm existing corridor best meets siting principles; (2) = identify opportunities to improve corridor placement or IOPs; (3) = acknowledge concern not easily resolved or avoided by corridor-level planning.

Abstract Acronyms and Abbreviations

ACEC = Area of Critical Environmental Concern; BLM = Bureau of Land Management; CDOT = Colorado Department of Transportation; ESA = Endangered Species Act; FO = Field Office; GIS = Geographic Information System; GMUG = Grand Mesa, Uncompahgre, and Gunnison; IOP = interagency operating procedure; MP = milepost; PEIS = Programmatic Environmental Impact Statement; RFI = request for information; RMP = Resource Management Plan; SRMA = Special Recreation Management Area; USFS = U.S. Forest Service; USFWS = U.S. Fish and Wildlife Service; VRM = Visual Resource Management; WSA = Wilderness Study Area; WWEC = West-wide Energy Corridor.