

Corridor 89-271

Southeast New Mexico Corridor

Corridor Rationale

Input regarding alignment from the Western Utility Group during the WVEC PEIS suggested following this route. There is a planned 115-kV electric transmission line that generally follows the corridor from MP 0 to MP 3.3. Currently, there are no pending or recently authorized ROWs for transmission lines within the corridor. Four recently authorized transmission lines intersect the corridor. One recently authorized oil and gas pipeline project is within a portion of the corridor and intersects the corridor at two other locations. Four other recently authorized oil and gas pipelines intersect the corridor.

Corridor location:

New Mexico (Chaves, De Baca, Eddy, Guadalupe, Lea, and Lincoln Co.)

BLM: Carlsbad and Roswell Field Offices
Regional Review Region(s): Region 2

Corridor width, length:

Width 3,500 ft

69 miles of designated corridor

213.3 mile-posted route, including gaps

Sec 368 energy corridor restrictions: (N)

- corridor is multi-modal

Corridor of concern (N)

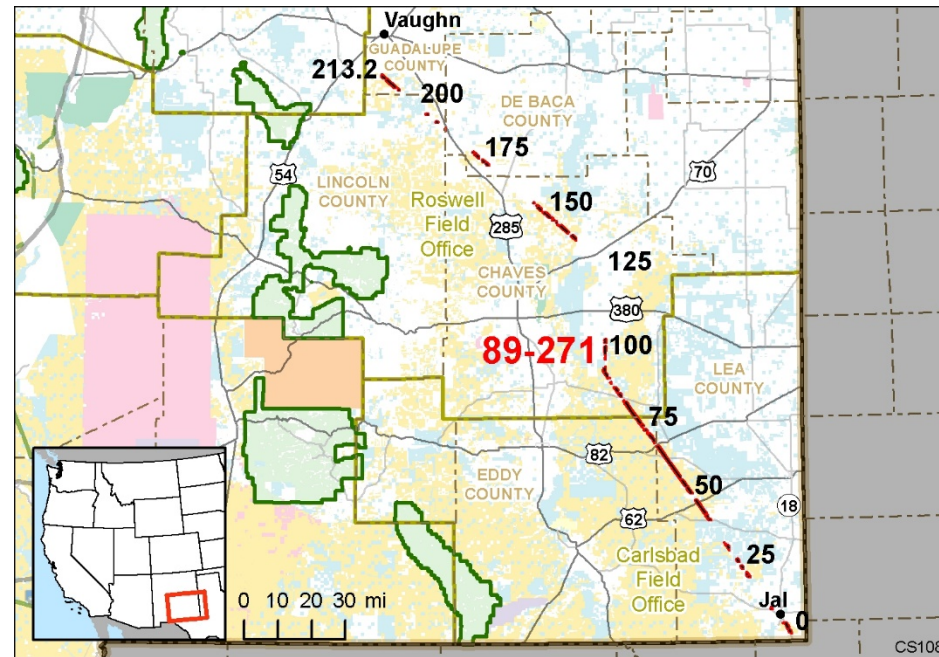


Figure 1. Corridor 89-271

Corridor history:

- Locally designated corridor prior to 2009 (N)
- Existing infrastructure (Y)
 - Pipelines:
 - natural gas (MP 0 to MP 4 and MP 175 to MP 213)
 - crude oil (MP 4 to MP 85 and MP 85 to MP 96)
 - refined pipelines (MP 175 to MP 213)
- Energy potential near the corridor (Y)
 - 2 solar and 1 wind power plants over 4 mi (MP 3, MP 10, and MP 80)
- Corridor changes since 2009 (N)

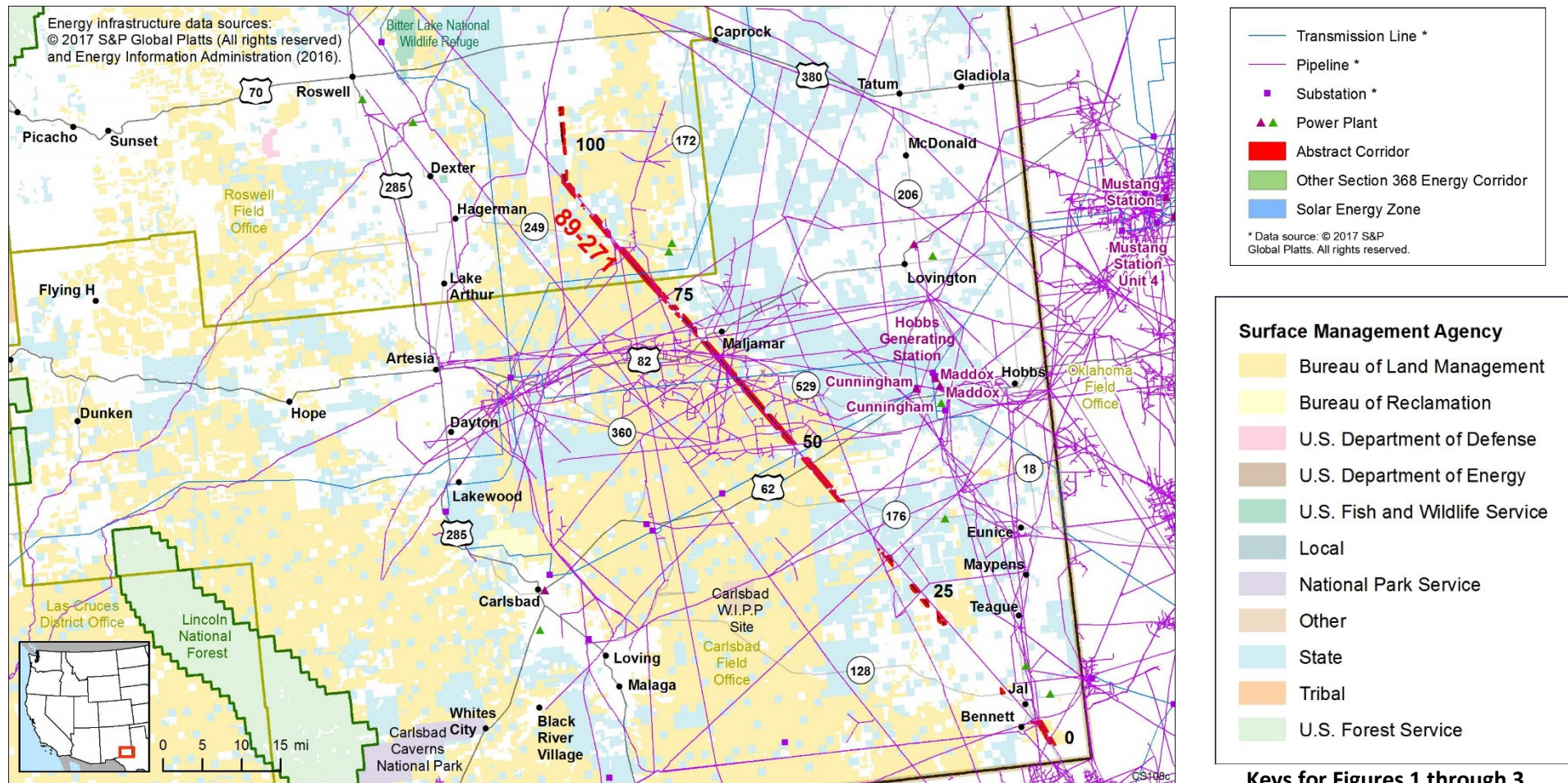


Figure 2. Corridor 89-271 (MP 0 to MP 100) and nearby electric transmission lines and pipelines

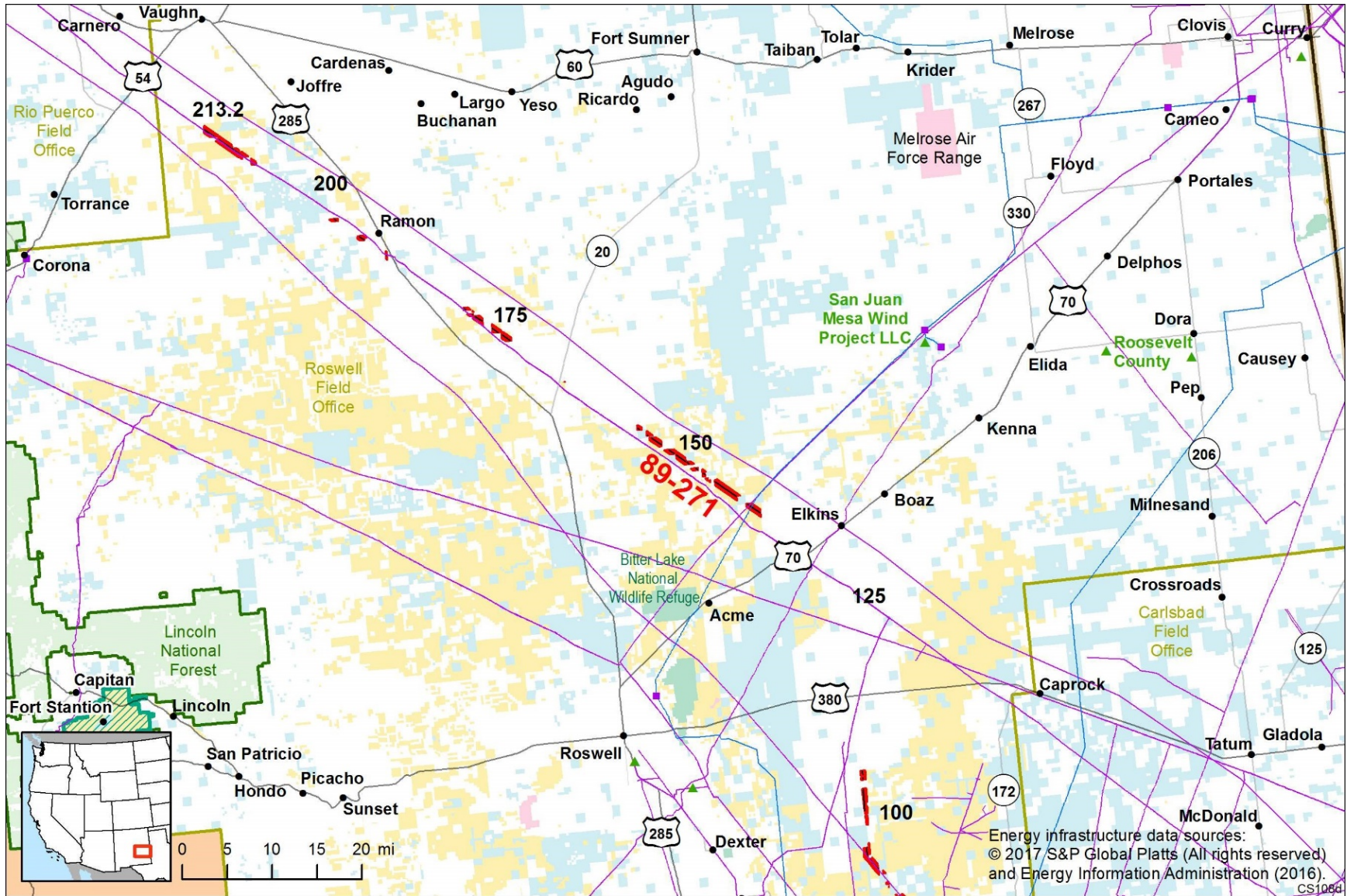


Figure 3. Corridor 89-271 (MP 100 to MP 213) and nearby electric transmission lines and pipelines

Conflict Map Analysis

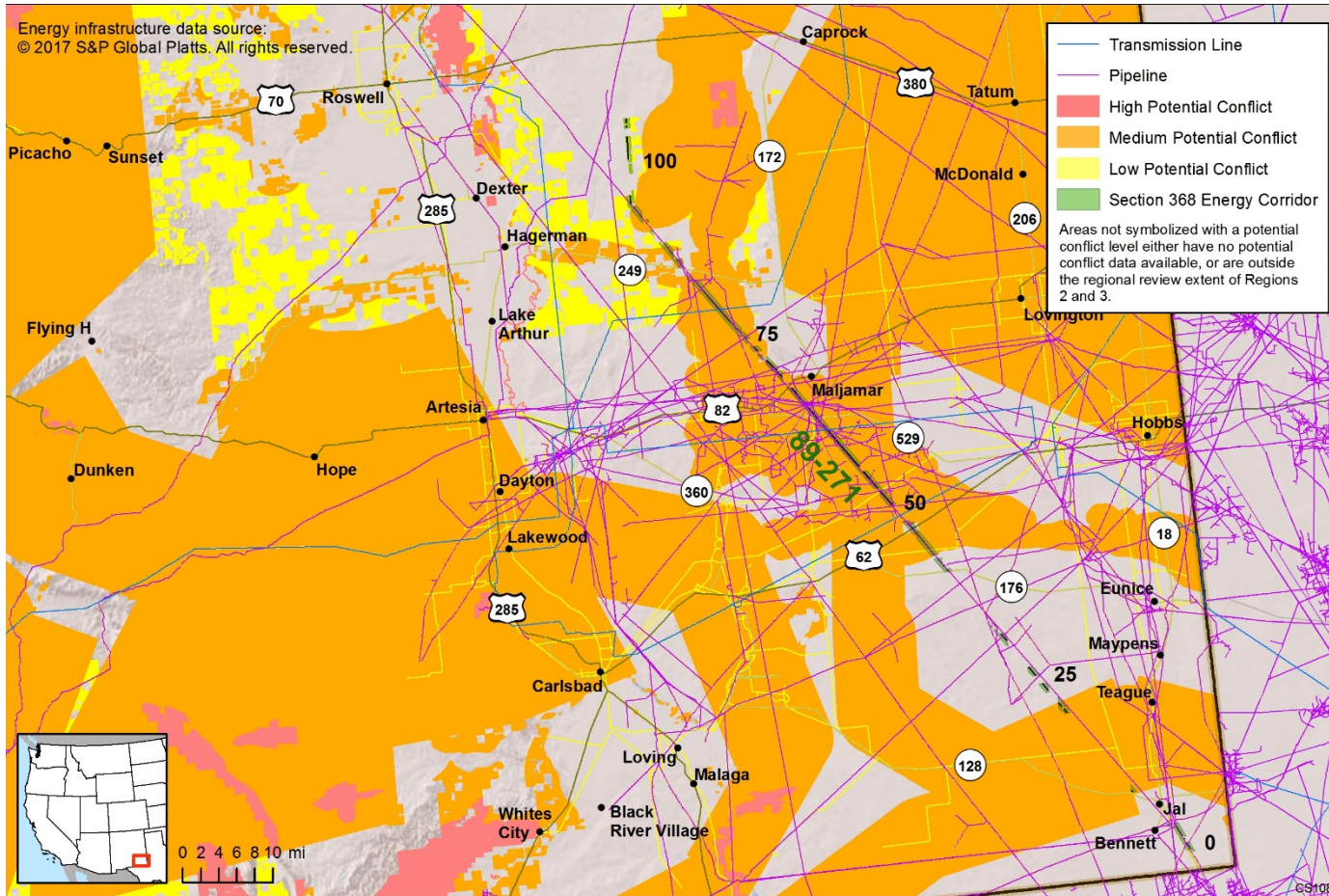


Figure 4. Map of Conflict Areas in Vicinity of Corridor 89-271 (MP 0 to MP 100)

Figures 4 and 5 reflect a comprehensive resource conflict assessment developed to enable the Agencies and stakeholders to visualize a corridor’s proximity to environmentally sensitive areas and to evaluate options for routes with lower potential conflict. The potential conflict assessment (low, medium, high) shown in the figure is based on [criteria](#) found on the WWEC Information Center at www.corridoreis.anl.gov. To meet the intent of the Energy Policy Act and the Settlement Agreement siting principles, corridors may be located in areas where there is potentially high resource conflict; however, where feasible, opportunity for corridor revisions should be identified in areas with potentially lower conflict.

Visit the 368 Mapper for a full view of the Potential conflict map (<https://bogi.evs.anl.gov/section368/portal/>)

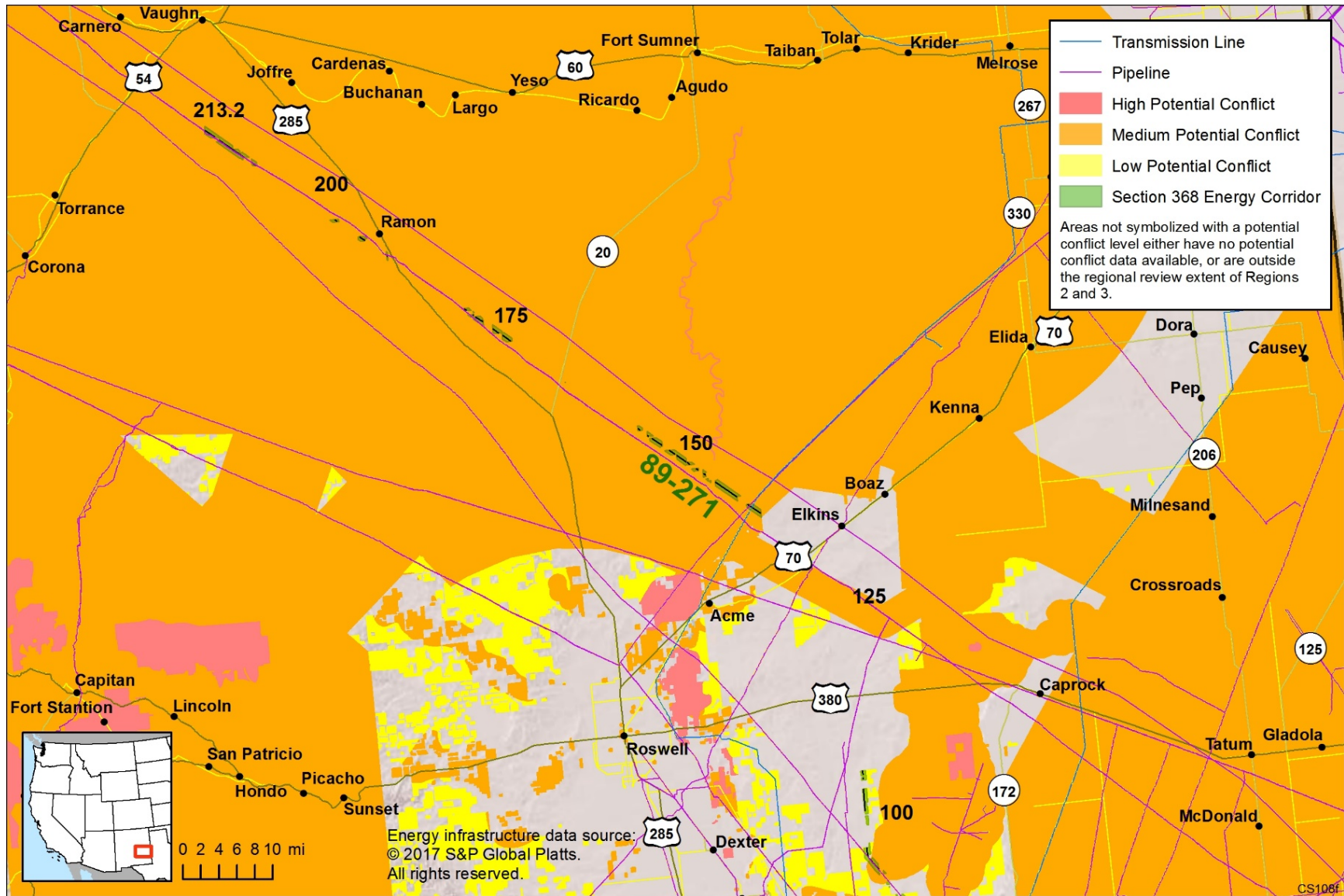


Figure 5. Map of Conflict Areas in Vicinity of Corridor 89-271 (MP 100 to MP 213)

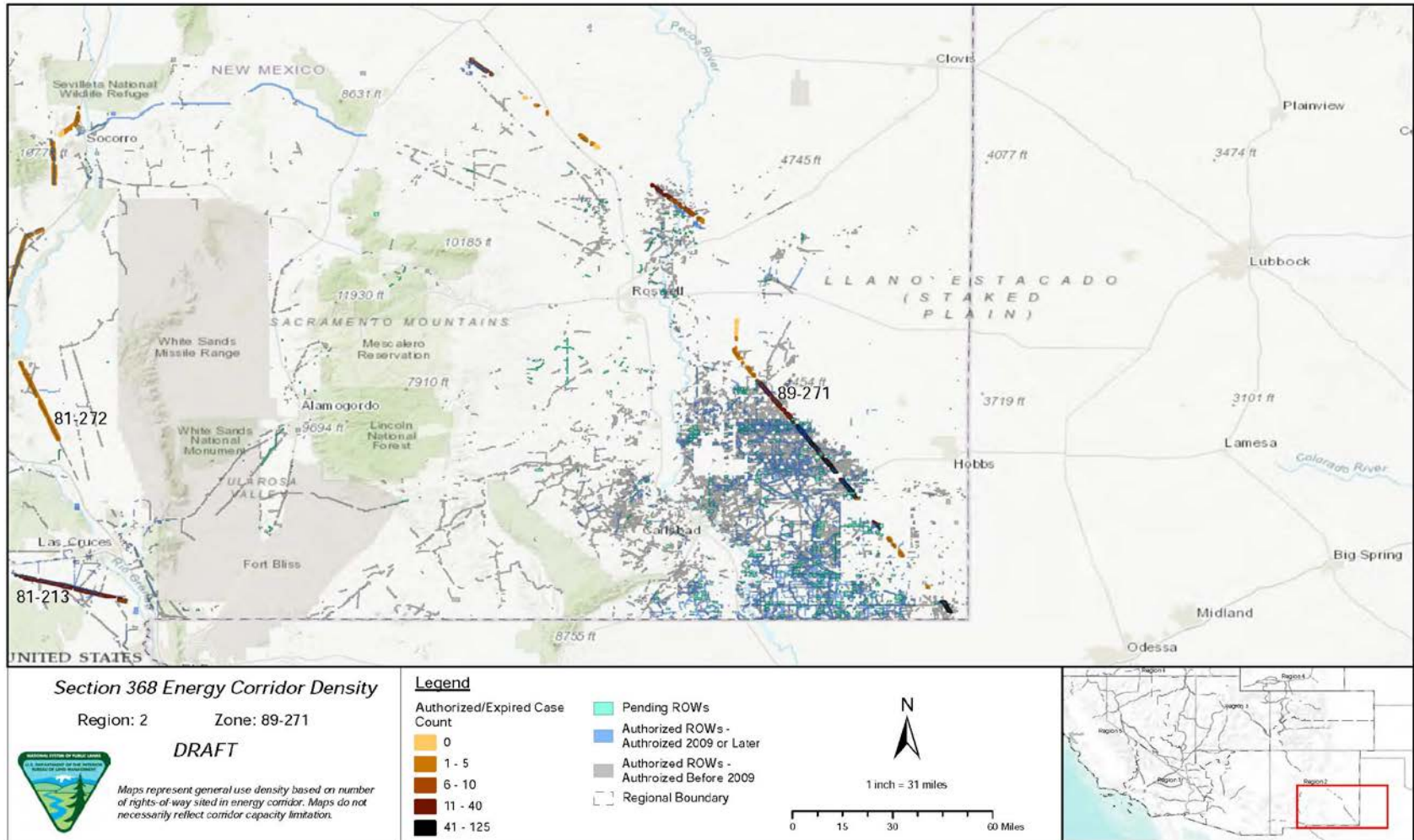


Figure 6. Corridor 89-271, Corridor Density Map

Figure 6 shows the density of energy use to assist in evaluating corridor utility. ROWs granted prior to the corridor designation (2009) are shown in grey; ROWs granted after corridor designation are shown in blue; and pending ROWs under current review for approval are shown in turquoise. Note the ROW density shown for the corridor is only a snapshot that does not fully illustrate remaining corridor capacity. Not all ROWs have GIS data at the time this abstract was developed. BLM and USFS are currently improving their ROW GIS databases and anticipate more complete data in the near future.

General Stakeholder Feedback on Corridor Utility

Stakeholders did not provide specific input on corridor utility.

Corridor Review Table

The table below captures details of the Agencies’ review of the energy corridor. Consideration of the general corridor siting principles of the 2012 Settlement Agreement framed each corridor review, to identify potential improvements to maximize corridor utility and minimize impacts on the environment. Initial Agency analysis is provided to facilitate further discussion during stakeholder workshops.

CORRIDOR 89-271 REVIEW TABLE							
ID	Agency	Agency Jurisdiction	County	Primary Issue	Corridor Location (by Milepost [MP])	Source	Agency Review and Analysis ^{1,2}
ENVIRONMENTAL RESOURCE ISSUES							
<i>Specially Designated Areas</i>							
89-271 .001	BLM	Roswell FO	De Baca, NM	Roswell Cave Complex ACEC	MP 172 to MP 175	GIS Analysis: corridor intersects ACEC.	There is a conflict between the corridor designation and the existing Roswell RMP. All lands in the ACEC are designated exclusion areas for major ROWs. This conflict must be resolved. There is an opportunity to revise the corridor to the north to follow an existing pipeline, or to revise the ACEC boundary or management prescriptions. (2)
89-271 .002	BLM	Roswell FO	De Baca, NM	SRMA	MP 172 to MP 175 MP 138 to MP 142 and MP 178	GIS Analysis: unnamed SRMA intersects corridor. GIS Analysis: unnamed SRMA is within 1 mi of corridor.	The Roswell RMP does not have exclusion or avoidance prescriptions for utility corridors that would intersect SRMAs. (1)
Ecology							
89-271 .003	BLM	Carlsbad FO		Lesser Prairie-chicken Habitat Evaluation Areas (under review for ESA listing)	MP 21, MP 45, MP 53 to MP 59, MP 77 MP 43 to MP 155	Agency Input: Lesser Prairie-chicken Habitat Areas. Comment on abstract: habitat fragmentation-energy infrastructure would likely be a significant barrier to the recovery and growth of Lesser Prairie-chicken populations.	The Agencies should consider opportunities for corridor revision by following existing State Highway 176, State Highway 62 towards Carlsbad, and route north on State Highway 360 until it terminates at State Highway 82 to avoid Lesser Prairie-chicken and Dunes Sagebrush habitat. However, this corridor revision may place the

CORRIDOR 89-271 REVIEW TABLE							
ID	Agency	Agency Jurisdiction	County	Primary Issue	Corridor Location (by Milepost [MP])	Source	Agency Review and Analysis ^{1,2}
						<p>Recommend moving the corridor west to avoid important habitat areas for the Lesser Prairie-chicken by following existing Hwy 176, Hwy 62 towards Carlsbad and routing it north on 360 to Hwy 82.</p> <p>The only proposed revision of the designated corridor would run across potentially high karst areas with low stability for energy infrastructure. Perhaps the risk of high karst areas could be mitigated through limitations on which types of infrastructure could be built within this region.</p> <p>Comment on abstract: consider opportunities for corridor revision by following existing State Highway 176, State Highway 62 towards Carlsbad, and route north on State Highway 360 until it terminates at State Highway 82 to avoid Lesser Prairie-chicken and Dunes Sagebrush habitat.</p>	<p>corridor in high karst potential areas. (2)</p>
89-271 .004	BLM	Carlsbad FO		Dunes Sagebrush Lizard (not listed under ESA)	MP 44 to MP 79 MP 43 to MP 155	<p>Agency Input: sensitive habitat for Dunes Sagebrush Lizard. Residence at MP 50.</p> <p>Comment on abstract: recommend moving the corridor west to avoid important habitat areas for the Dunes Sagebrush Lizard by following existing Hwy 176, Hwy 62 towards Carlsbad</p>	<p>In the 2008 SSS-RMPA, it was designated as only available for buried transmission and pipelines to reduce conflicts with special status species and their habitats. Transmission powerline routes were determined to avoid crossing through suitable or occupied habitat for these species.</p>

CORRIDOR 89-271 REVIEW TABLE							
ID	Agency	Agency Jurisdiction	County	Primary Issue	Corridor Location (by Milepost [MP])	Source	Agency Review and Analysis ^{1,2}
						and routing it north on 360 to Hwy 82.	The Agencies should consider opportunities for corridor revision by following existing State Highway 176, State Highway 62 towards Carlsbad, and route north on State Highway 360 until it terminates at State Highway 82 to avoid Lesser Prairie-chicken and Dunes Sagebrush habitat. However, this corridor revision may place the corridor in high karst potential areas. (2)
89-271 .005				Mexican Spotted Owl (ESA-listed: threatened)	Not specified.	Comment on abstract: impacts to Mexican Spotted Owls and to the Wright's Marsh Thistle should be analyzed on a finer scale in New Mexico.	This corridor does not appear to intersect with Mexican Spotted Owl or Wright's Marsh Thistle critical habitat. Further analysis to determine the presence of all species occurring within the area will be considered outside of corridor-level planning. (3)
89-271 .006	BLM	Roswell FO	De Baca, NM	Pecos Bluntnose Shiner (ESA-listed: threatened)	MP 144 to MP 145	Comment on abstract: intersects the Pecos River within 3 mi of Pecos Bluntnose Shiner critical habitat.	The corridor does not intersect critical habitat. Consultation with the USFWS would still be required prior to authorizing development in the corridor but further analysis of this species is not a consideration for corridor-level planning. (3)
89-271 .007				Special Status Species	Not specified.	Comment on abstract: additional species not identified in the corridor abstract may be present: New Mexico Meadow Jumping Mouse, Penasco Least Chipmunk, Least Tern, Mexican Spotted Owl, Northern Aplomado Falcon, Piping Plover, Red Knot, Southwestern Willow Flycatcher, Pecos Bluntnose Shiner, Pecos Gambusia, Texas Hornshell, Koster's Springsnail, Pecos Assiminea Snail, Roswell Springsnail, Noel's Amphipod,	This corridor location within the current range where these species may occur is not easily resolved or avoided by corridor-level planning because alternate routes would still require siting through the current range of these species. Further analysis to determine the presence of all species occurring within the area will be considered outside of corridor-level planning. (3)

CORRIDOR 89-271 REVIEW TABLE							
ID	Agency	Agency Jurisdiction	County	Primary Issue	Corridor Location (by Milepost [MP])	Source	Agency Review and Analysis ^{1,2}
						Gypsum Wild-buckwheat, Kuenzler Hedgehog Cactus, Lee Pincushion Cactus, Pecos Sunflower, Sneed Pincushion Cactus, Tharps's Blue Star, and Wright's Marsh Thistle. Conduct further analysis to determine the presence of abovementioned species.	
Lands with Wilderness Characteristics							
89-271 .008	BLM	Carlsbad FO	Eddy, NM	Lands with wilderness characteristics	MP 77 to MP 78	Comment on abstract: corridor intersects with BLM wilderness-quality lands. 24 acres overlap (Mescalero Sands-CWP), some of the last habitat for the Dunes Sagebrush Lizard and is comprised of unique rolling red sand dunes, which are not represented in any other wilderness inventory unit. This area is also a rest stop for many migratory birds. BLM should exclude energy corridors from all wilderness-quality lands.	The BLM's current inventory findings will be used in land use planning analyses related to the revision, deletion, or addition to the energy corridors. Consideration of CWP is beyond the Agencies scope and authority. As such, the corridor's current location best meets the siting principles. (1) At such time that citizens' inventory information is formally submitted, the BLM will compare its official Agency inventory information with the submitted materials, determine if the conclusion reached in previous BLM inventories remains valid, and update findings regarding the lands ability to qualify as wilderness in character.
Visual Resources							
89-271 .009	BLM	Roswell FO	Chaves, De Baca, and Lincoln, NM	VRM Class III	MP 82 to MP 89, MP 129 to MP 133, MP 138 to MP 147, MP 164, and MP 177 to MP 189	GIS Analysis: VRM Class III areas and corridor intersect.	VRM Class III allows for moderate change to the characteristic landscape, although minimizing visual contrast remains a requirement. Management activities may attract the attention of the casual observer, but shall not dominate the view. (1)

CORRIDOR 89-271 REVIEW TABLE							
ID	Agency	Agency Jurisdiction	County	Primary Issue	Corridor Location (by Milepost [MP])	Source	Agency Review and Analysis ^{1,2}
89-271 .010	BLM	Roswell FO	Chaves, De Baca, Guadalupe, and Lincoln, NM	VRM Class IV	MP 79 to MP 83, MP 89 to MP 105, MP 147 to MP 155, MP 172 to MP 178, and MP 192 to MP 213	GIS Analysis: VRM Class IV areas and corridor intersect.	The existing corridor location best meets the siting principles. (1)
Cultural Resources							
89-271 .011	BLM	Carlsbad FO	Lea and Eddy, NM	Cultural resources	Entire corridor	Agency Input: there are already several dozen known cultural resources that are protected by Section 106 of the NHPA that could be adversely affected by future development in the designated energy corridor. Mitigation would include avoiding them or data recovery. The National Transmission Team for cultural resources includes archaeologists who specialize in large interstate projects as well as consultation and application of mitigation measures.	The potential for cultural resources is a concern for the Agencies that cannot be resolved during corridor-level planning. Surveys will occur as part of the ROW application process. Existing IOPs specific to cultural resources and tribal consultation would be followed in connection with any proposed energy project in the corridor. (3)
Land Use Concerns							
Military and Civilian Aviation							
89-271 .012	BLM	Roswell FO	Chaves, De Baca, Lincoln, and Guadalupe, NM	MTR – VR	MP 121 to MP 128 and MP 145 to MP 213 MP 121 to MP 128 MP 145 to MP 213 MP 196 to 210 MP 9 to MP 22 MP 49 to MP 64 MP 158 to MP 213	GIS Analysis: VR and corridor intersect. Comment on abstract: military training routes (VR-100/125, IR-133/113, VR-125). Potential for an obstruction in airspace used for military operations. Please limit construction to 100-ft AGL and 5 nautical miles away from either side of centerlines.	The concern related to MTRs is noted and the adherence to existing IOP regarding coordination with DoD would be required to ensure this potential conflict is considered at the appropriate time. In addition, there is an opportunity to consider a revision to the existing IOP to include height restrictions for corridors in the vicinity of DoD training routes. (2)
89-271 .013	BLM	Roswell FO	Guadalupe and Lincoln, NM	MTR – Slow-speed Route	MP 196 to 210	GIS Analysis: slow-speed route intersects corridor and corridor gaps.	

CORRIDOR 89-271 REVIEW TABLE							
ID	Agency	Agency Jurisdiction	County	Primary Issue	Corridor Location (by Milepost [MP])	Source	Agency Review and Analysis ^{1, 2}
89-271 .014	BLM	Carlsbad FO and Roswell FO	Guadalupe, Lincoln, De Baca, Chaves, and Lea, NM	MTR – IR	MP 9 to MP 22, MP 49 to MP 64, and MP 158 to MP 213	GIS Analysis: IR and corridor intersect. Comment on abstract: corridor is adjacent to Talon MOA, IR-192, IR-194 owned and operated by 49th Wing, Holloman AFB. Height should be no higher than existing structures and may affect training if over 100-ft AGL.	
89-271 .015	BLM	Roswell FO	Guadalupe, Lincoln, De Baca, and Chaves, NM	DoD SUA - MOA	MP 138 to MP 208	GIS Analysis: MOA and corridor intersect. Comment on abstract: corridor is adjacent to Talon MOA, IR-192, IR-194 owned and operated by 49th Wing, Holloman AFB. Height should be no higher than existing structures and may affect training if over 100-ft AGL.	
Other noted land use concerns							
89-271 .016			Sandoval, NM	Corridor siting in Sandoval County	Not specified.	Comment on abstract: concerns with potential impacts of a Section 368 Corridor located in eastern Sandoval County with respect to economic impacts, infrastructure impacts, impacts to ecological values, water quality, tribal cultural values and sacred ceremonial sites, wildlife habitat, and human health and safety.	There is no corridor within eastern Sandoval County. There are four Section 368 energy corridors in New Mexico and Corridor 80-273 is the only corridor in Sandoval County. The corridor begins approximately 37 mi northwest of Placitas at the western edge of the Zia Pueblo Reservation and continues northwest for 27 mi within western Sandoval County before continuing into McKinley County. (1)

¹ Projects proposed in the corridor would be reviewed during their ROW application review process and would adhere to Federal laws, regulations, and policy.

² (1) = confirm existing corridor best meets siting principles; (2) = identify opportunities to improve corridor placement or IOPs; (3) = acknowledge concern not easily resolved or avoided by corridor-level planning.

Abstract Acronyms and Abbreviations

ACEC = Area of Critical Environmental Concern; AGL = above ground level; BLM = Bureau of Land Management; CWP = citizens' wilderness proposal; DoD = Department of Defense; ESA = Endangered Species Act; FO = Field Office; GIS = geographic information system; IOP = interagency operating procedure; IR = Instrument Route; MP = milepost; MOA = Military Operations Area; MTR = Military Training Route; NHPA = National Historic Preservation Act; PEIS = Programmatic Environmental Impact Statement; RMP = Resource Management Plan; ROW = right-of-way; SRMA = Special Recreation Management Area; SUA = Special Use Airspace; USFS = U.S. Forest Service; USFWS = U.S. Fish and Wildlife Service; VR = Visual Route; VRM = Visual Resource Management; WWEC = West-wide Energy Corridor.